

TMLIGHTING

BRINGING ART TO LIGHT

THE LEADING
INTERNATIONAL
ART LIGHTING
SPECIALISTS

BRINGING ART TO LIGHT

Transforming art collections in galleries, hotels,
historic houses, museums, private collections and
your home.

TM LIGHTING



| INTRODUCING

TM LIGHTING is an internationally respected art lighting specialist, manufacturing exceptional high colour rendition accent lights and picture lights for art collections. The London-founded company provides an end-to-end service, delivering expert advice and precise installation, it delivers projects across private residences, galleries, museums, stately homes, luxury retail and high-end commercial spaces.

Established in 2012 by Andrew Molyneux and Harry Triggs, the company was founded with a singular mission: to bring art to life with a range of advanced, sustainable lighting. For this venture the pair brought their passion for art and the environment, along with over 40 years in lighting and product design.

In its first year of business, TM Lighting was the first specialist in the market to set an industry benchmark across its entire range of 97+ Colour Rendition Index (CRI), a vital component in high quality lighting.

The company uses the latest and most sophisticated LED energy - efficient technology in all its products to achieve the best possible conditions for lighting artwork. This mission was developed in response to the 2011 energy-saving legislation and the phasing out of more traditional incandescent light bulbs.

TM Lighting products ensure the best colour rendition and the most effective light distribution. With a focus on discreet design, and careful, conservation-friendly light source selection that produces no ultraviolet or infrared light and no forward heat throw, TM Lighting is able to highlight the vibrancy of every artwork using the latest technology. This expertise transfers to high-end retail where colour rendering is key to emphasising the true colour and quality of fashion items and luxury goods.

TM Lighting offers first-class attention to detail throughout every aspect of its bespoke service; from the initial art survey to on-site tailored installation and fine-tuning.

TM Lighting's range of products not only perfectly illuminates artworks but also greatly reduces the environmental footprint of displaying artworks effectively, decreasing runnings costs and almost eliminating maintenance schedules previously required for conventional lighting forms.



Photography by Andrew Beasley

TM PHILOSOPHY

We blend innovative technology with cutting-edge design to create remarkable lighting solutions that transform the way in which artwork is perceived and presented, enriching the viewing experience.

We strive to continually innovate, promote education, maintain honesty and integrity, collaborate and share, while striving for perfection in everything that we do.





TWO TEMPLE PLACE

Eye of the Collector



TM GALLERY 130 SPOTLIGHT

Art & Exhibitions

Photography by Ben Deakin

HIGHLIGHT KENWOOD HOUSE

The 17th century Kenwood House lies on the edge of Hampstead Heath. Its final private owner, Lord Iveagh, gave the house and his personal collection of 63 Old Master paintings to the nation. Iveagh bestowed it on the condition that the house was to provide the feel of an 'artistic home of a gentleman of the 18th century' and be made free for the public to access forever. This philanthropic act made Kenwood a home to one of the most impressive collections of Old Master works in the world, all now cared for by English Heritage.

We installed the TM MasterLight at the magnificent neo-classical Kenwood House. Illuminating the works of Thomas Gainsborough, Sir Joshua Reynolds, William Turner, Johannes Vermeer, and Rembrandt has been a tremendous privilege for us since we were first commissioned by English Heritage to bring this incredible collection to light in 2022.

Patent pending and unrivalled in the marketplace, the TM MasterLight is a high-performance miniature

LED picture light capable of illuminating 4-meter-high canvases from a minimal profile. With an uncompromising optical performance, the MasterLight features targeted light distribution, a front cowl to provide excellent glare control, trim adjustment to remove spill light above the canvas, and a high colour rendition CRI 97+. The TM MasterLight is available in three slender profiles - Classic, Square and Round - to complement both contemporary and heritage settings alike.



Photography by Andrew Beasley



KENWOOD HOUSE

Music Room



TM MASTERLIGHT

Historic Houses

Photography by Andrew Beasley



Photography by Andrew Beasley

HIGHLIGHT THE LONDONER

The Londoner is the capital's first 'super boutique' hotel. Besides its 16 floors of luxury hospitality with 350 bedrooms and six restaurants and bars, it is home to an expansive art collection.

The artworks in Whitcomb's, the hotel's all-day dining restaurant, are illuminated with ZeroSixty surface mounted spotlights, illuminating Tina Lechner black and white photography and Frida Wannerberger black ink portraits. Upstairs, twenty antique bronze-plated ZeroSixty track lights illuminate the Y-shaped marble bar in the centre of Y Bar (found in the hotel's resident-only Residence), creating a central focal point in the space.

A TM SlimLight PRO was also installed in every room to illuminate the contemporary prints. Each picture light was discretely placed in a panel attached to the ceiling to hide the picture light from view while achieving its illumination effect.

TM also supplied stalk-mounted, ZeroThirtyOne spotlights, which operate as direct reading lights suspended from the ceiling. The TM SlimLight PRO was installed and focussed for each artwork displayed in the guest corridors and stairwells, illuminating prints by leading contemporary artists such as Antony Gormley and Marc Quinn.



THE LONDONER
Y Bar



TM ZEROSIXTY SPOTLIGHTS | ARTTRACK

Restaurants and Hotels

Interior design by Yabu Pushelberg

Lighting design by Inverse Lighting Design

Photography by Andrew Beasley



APSLEY HOUSE

Waterloo Gallery



TM CLASSIC PICTURE LIGHT

Historic Houses

Photography by Tim Bol




PATEK PHILIPPE
GENEVE


PATEK PH
GENEVE

PATEK PHILIPPE
London



ILIPPE
E

ILIPPE
E


PATEK PHILIPPE
GENEVE



TM GALLERYFORTY SPOTLIGHTS | ARTTRACK

Luxury Retail

Photography by Andrew Beasley

PROJECTS | 21



HIGHLIGHT 'RAYTRACE' MILAN DESIGN WEEK

TM Lighting shined a light on design innovation to present Raytrace at Milan Design Week in 2019. The company collaborated with Benjamin Hubert of LAYER

and Cosentino, a worldwide leader in the production and distribution of innovative surfaces for architecture and design, to bring this project to fruition.



Specialist lighting for Raytrace was an integral part of Hubert's installation at Milan Design Week. TM Lighting specified their superior, high colour rendition LED ZeroSixty accent lights with a custom length 'snoot' to provide enhanced glare control,

mounted above the installation on ArtTrack to focus the light directly into the organic forms composed of Dekton® ultracompact surfaces, creating caustic light effects and an immersive, mesmerising experience for visitors.



PRIVATE RESIDENCE
London



TM SLIM LIGHT PRO PICTURE LIGHTS

Residential

Interior design by Tim Gosling

Photography by Andrew Beasley



Images courtesy Caprice Holdings, photography @wonderhatch

HIGHLIGHT BRASSERIE OF LIGHT

Brasserie of Light is a chic destination restaurant and bar from Caprice Holdings, at Selfridges, London. The centre piece is a 24ft crystal encrusted Pegasus statue created by Damien Hirst, set in spectacular interior design from Martin Brudnizki.

TM Lighting provided the TM GalleryOneFifty LED art light to highlight Hirst's new work and designed a custom, structurally self-supporting stanchion to integrate the system seamlessly into David Chipperfield's monumental Duke Street glass façade.

The G150, custom finished to match with the Art Deco interiors, utilises high CRI 97+ full colour rendition LED engines to ensure true colour accuracy and bring Hirst's sculpture to life.



CARACTÈRE BY
EMILY ROUX

Restaurant – Notting Hill



TM RIVO40 SPOTLIGHTS | AYDIN PICTURE LIGHTS

Restaurants and Hotels

Design by Rosendale Design

Photography by John Carey

HIGHLIGHT ARUNDEL CASTLE

Arundel Castle's story begins with its construction in 1067 and is home to a rare and incredible collection of paintings by renowned artists including Van Dyck, Gainsborough and Canaletto.

The castle's art lighting has been brought to the 21st century with the installation of our TM Goodwood Picture Lights to illuminate its magnificent art collection.

Over a hundred picture lights have been individually focussed for masterpieces in the collection displayed across its galleries, halls and corridors. Our high colour rendition lighting has illuminated works in the care of

the Duke of Norfolk by artists including Anthony van Dyck, Peter Paul Rubens, Thomas Gainsborough, Sir Joshua Reynolds, and Antonio Canaletto.

Within spaces such as the Great Hall, the lights are dimmable, ensuring the lighting scheme can be adjusted to the right ambience whether the spaces are being experienced as a home, museum or event space.



Photography by Andrew Beasley



COMBERMERE ABBEY

Shropshire



TM CLASSIC PICTURE LIGHT

Historic Houses

Photography by Tim Bol



Photography by Andrew Beasley

HIGHLIGHT BURGHLEY HOUSE

Burghley House is one of the largest and grandest surviving houses of the sixteenth century and a magnificent example of the great Elizabethan 'prodigy' houses. Conceived by William Cecil, Lord High Treasurer to Queen Elizabeth I between 1555 and 1587, Burghley is a testament to the ambition and vision of the most powerful courtier of the first Elizabethan age.



HEAVEN ROOM – Seen above

The Heaven Room displays Greek mythological scenes painted in the Restoration period by Antonio Verrio. The extravagant mural covers three walls and the entire ceiling. Despite sections of this room having an abundance of light, some areas fall into shadow. Balancing daylight with artificial light was therefore key to lighting this space. Our solution to bringing this heavenly scene to life was to create a custom adaptation of the TM GalleryOneSixty spotlight to illuminate the entire mural. The lighting is discreetly placed behind the doors and Philip Rollos' oval wine cistern, ensuring the focus can be on the spectacular mural with an even wash of light.

GEORGE ROOMS – Next page

Our approach across all the George Rooms was to ensure that the outstanding ceiling murals and painting collection were given equal prominence. Not every work needed to be lit to achieve this balance. The TM Linear Wash is used to illuminate Antonio Verrio's ceiling mural, while the TM Classic picture light is used for the key pieces on display. Our subtly placed picture lights and spotlights do not overpower the room, creating a sense of warmth befitting the room's original function as a drawing room. The highly technical process of using picture lights to illuminate two large artworks, each over 2.5m in height, was also delivered in the George Rooms and can be seen [here](#).



BURGHLEY HOUSE

George Rooms



TM CLASSIC PICTURE LIGHT

Historic Houses

Photography by Andrew Beasley



CLASSIC
PRIVATE RESIDENCE
London

TM SLIM LIGHT PRO PICTURE LIGHTS

Residential

Design by Rebecca Hughes Interiors

Photography by Rebecca Hughes



CONTEMPORARY PRIVATE RESIDENCE

London

TM SLIM LIGHT PRO PICTURE LIGHTS

Residential

Design by Rients Bruinsma

Photography by James McDonald – Artwork by Ori Gersht



COX LONDON
Chelsea Showroom



TM ZEROSIXTY SPOTLIGHTS | ARTRACK & ARTPOINT

Retail

Photography by Inge Clemente



Photography by Jonathan James Wilson



HIGHLIGHT GOODWOOD HOUSE

TM Lighting's story begins at Goodwood House. This British landmark houses a remarkable collection of artworks by Van Dyck, Canaletto, Reynolds, Romney, Stubbs, Lely and the brothers, John and George Smith of Chichester.

In 2012, we received our first commission to bring the magnificent collection at Goodwood House to light. In honour of this project, we designed a bespoke picture light to fit with the aesthetic of existing luminaires used throughout Goodwood House, home of the Duke and Duchess of Richmond and Gordon, that combines the glamour of a great English country house with the warmth of a family residency.

This unique building also provides a dramatic setting for this beautiful, private art collection in the country, now brought back to light by The TM Goodwood Picture Light.

The TM Goodwood Picture Light includes a true colour LED module (97+ CRI), with uniform light projection and a deep hood design for added glare control. It comfortably lights canvases up to 4 metres in height. As with the rest of the TM Lighting range, it uses minimal energy (between 1 and 22 watts depending on the size) and holds an extra long lamp life of 50,000 hours (approximately 15 years).



GOODWOOD HOUSE

The Ballroom



TM GOODWOOD PICTURE LIGHTS

Historic Houses

Photography by Jonathan James Wilson



MTART AGENCY
Central London Gallery Space



TM ZEROSIXTY ARTTRACK SPOTLIGHTS

Galleries and Museums

Photography by Andrew Beasley



VICTORIA & ALBERT (V&A) MUSEUM

Foil – London Design Festival



CUSTOM TM ZEROSIXTY SPOTLIGHTS

Specialist Lighting

Design by Benjamin Hubert & Braun

Photography by Ed Reeve



HOME FARM
BY JOHN PAWSON
Cotswolds, England



TM ZEROFORTY SPOTLIGHTS

Residential

Design by John Pawson Architecture

Lighting design by Light IQ

Photography by Dezeen

HIGHLIGHT FOUNDLING MUSEUM

The Foundling Museum recounts the history of the Foundling Hospital, which served as the United Kingdom's first home for children facing abandonment. The museum hosts the renowned Foundling Hospital Collection and Gerald Coke Handel Collection.

TM Lighting was briefed to update the lighting systems within the museum to have more versatility towards changing exhibitions, while nodding and respecting the heritage aesthetic within the space.

In the Court Room, the clear goal was to update lighting to minimise the appearance of modern interventions, in order to preserve the room's original form.

This was achieved by replacing the large gold picture lights with the TM Classic Picture Light finished in white to match the ceiling. The roundels, which had never previously been lit, were highlighted through the minimal ZeroThirtyOne spotlights on adjustable length stalks, painted white to ensure that they disappeared into the white stucco features within the room.



Photography by Andrew Beasley



FOUNDLING MUSEUM

The Court Room



CUSTOM TM CLASSIC PICTURE LIGHTS
TM ZEROTHIRTY SPOTLIGHTS

Historic Houses

Photography by Andrew Beasley



CHARLES BURNAND GALLERY

Fitzrovia, London



TM GALLERY ONETHIRTY SPOTLIGHTS

Galleries and Museums

Photography by Anthony Beasley



TEFAF MAASTRICHT

Symbolic & Chase



TM GALLERY ONETHIRTY
TM ZEROTWENTYONE SPOTLIGHTS | GOALPOST

Retail

Photography by Symbolic & Chase



SPENCER HOUSE

The Great Room



CUSTOM™ CLASSIC PICTURE LIGHTS

Historic Houses

Lighting Design by Charles Marsden-Smedley

Photography by Andrew Beasley



THE WALLACE COLLECTION

London



TM SLIMLIGHT PRO PICTURE LIGHTS

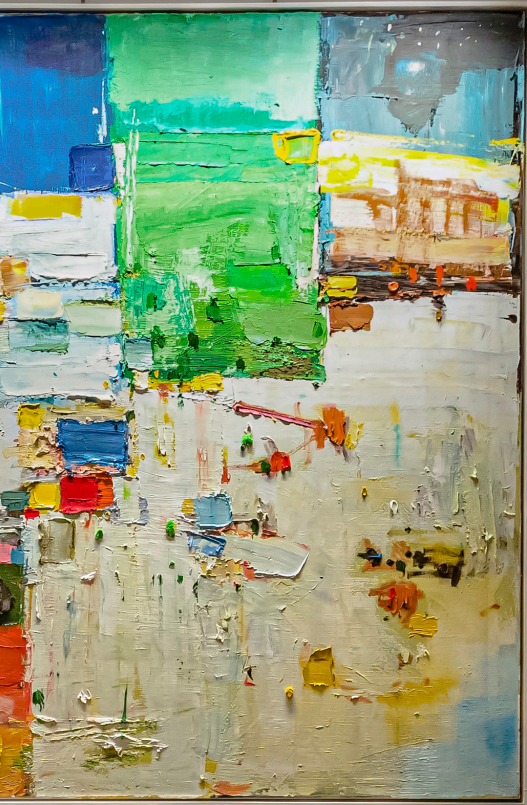
Galleries and Museums

Photography by Andrew Beasley



PRIVATE RESIDENCE

London



TM SLIMLIGHT PRO PICTURE LIGHTS

Residential

Interior Design by Barlow & Barlow Design

Lighting Design by Maxwell Barlow



THEATRE ROYAL DRURY LANE

The King's Box



TM CLASSIC PICTURE LIGHTS

Historic Houses

Design by Andrew Lloyd Webber - Lighting Design by BDP

Photography by Andrew Beasley



Photography by Andrew Beasley

HIGHLIGHT FRIEZE LONDON

Hosting art fairs worldwide from New York City to Seoul to London, Frieze is the world's leading platform for modern and contemporary art. Frieze London returns to the UK every autumn attracting artists, galleries, collectors and art lovers from around the globe.



TM Lighting has had the honour of illuminating the entirety of Frieze London. This project encompassed lighting all galleries and concourses, supplying the highest quality of light for a fraction of the energy use and associated carbon footprint. We supplied state-of-the-art GalleryOneThirty (G130) spotlights and GalleryOneSixty (G160) floodlights for the whole fair, creating a textured yet consistent lighting experience for all galleries participating in the event.

The use of our spotlights at Frieze reduced the energy usage by more than 5000 kWh, cutting energy use on lighting by approximately half..

We deliver our projects with versatility in mind, which has never been truer than with this installation – from lighting holographic artworks to adjusting light colour and temperature, our adaptable lights give texture and better rendition to the hundreds of pieces on display.

High colour rendition lighting is key to experiencing an artwork to its fullest, and our lighting provision for Frieze provided lighting rated at 98 on the colour rendition index.



FRIEZE MASTERS

Offer Waterman



TM GALLERY ONEFIFTY SPOTLIGHTS

Art and Installations

Photography by Luke Walker



THE CHARTERHOUSE

The Great Chamber



TM SLIMLIGHT PRO PICTURE LIGHTS
TM ZERO SIXTY SPOTLIGHTS

Historic Houses

Photography by Tim Bol



NO. 5 SOCIAL
FOR JASON ATHERTON

Restaurant – Notting Hill



TM AYDIN PICTURE LIGHTS

Restaurants and Hotels

Design by Rosendale Design

Photography by John Carey



Photography by Andrew Beasley

HIGHLIGHT TM LIGHTING GALLERY

As art lighting specialists, we consider the TM Gallery a natural location to discover noteworthy art. The gallery is a collaborative not-for-profit space for collectors, and a curated platform for accomplished career artists, or those with a celebrated body of iconic works.



Our programme has featured a retrospective of prints by British icon Bridget Riley, a solo exhibition for contemporary artist Robert Montgomery, a joint exhibition for Woolwich Printmaking Prize Winners Chris Roantree and Akarsh Kummatummal, and an exhibition for Ingram Prize Winner Alex Searle.

We believe that when art is lit to its best, it has the power to transform an individual artwork or an entire collection. Our museum-quality art lighting helps us to achieve this, be it for an exhibition, an art fair, in our gallery, or your own home.



TM LIGHTING GALLERY

George Triggs Exhibition



TM GALLERY ONEFIFTY SPOTLIGHTS

Galleries and Museums

Photography by Damian Griffiths



CLASSIC
PICTURE LIGHTS



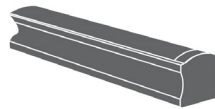
CONTEMPORARY
PICTURE LIGHTS



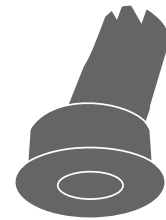
ACCENT
LIGHTS



GALLERY
LIGHTS



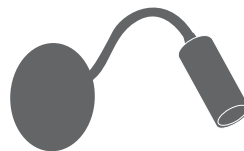
LINEAR LED
LIGHTS



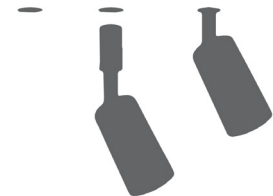
DOWN
LIGHTS



FREESTANDING
LIGHTS



BEDSIDE
LIGHTS



MOUNTING
SYSTEMS

TM PRODUCT RANGE

The award-winning TM product range has been carefully designed to offer tailored solutions for any environment or installation. The whole range includes top quality light engines that ensure a minimum of 97+ CRI colour rendition with R9 of ≥ 95 , which brings art to life.



COLOUR RENDITION

Not all light sources are equal. Colour rendition is a quantitative measure of the ability of a light source to render the colours of various objects faithfully in comparison with a natural light source. Daylight (natural light) is used as the benchmark 100 CRI (100%). When choosing LEDs for lighting art, we recommend 97+ CRI.



COLOUR TEMPERATURE AND BEAM

LED lighting is available in various warmths of light. These can affect the look and feel of an artwork and its environment.

2700K (incandescent white) - suitable for homes and lifestyle projects
3000K (neutral warm white) - suitable for contemporary art galleries and commercial spaces
4000K (cool white) - suitable for contemporary galleries, also great for viewing silver and diamonds.



CONSISTENCY

The LED technology is matched across the entire TM Lighting product range to provide continuity of colour and performance throughout each project.



ARTWORK CONSERVATION

TM Lights ensure that lux levels are precisely set to conservation standards for each artwork and eliminate damaging elements such as infra-red, heat and ultraviolet.

TM PICTURE LIGHTS

TM picture lights, developed in response to recent energy saving legislation, use the finest quality energy-efficient LED technology to illuminate artwork evenly. All TM picture lights ensure an even wash of light over the canvas even on artworks as high as 2m. The same technology and adjustable light source is specified across all different housings and finishes.

For more information please visit tmlighting.com

TM CLASSIC PICTURE LIGHTS

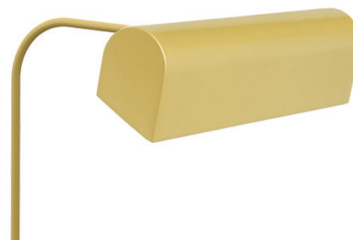
300 TM PICTURE LIGHT



320 TM GOODWOOD



350 TM CLASSIC



TM DECORATIVE PICTURE LIGHTS

340 AYDIN



360 TM SOLO



TM CONTEMPORARY PICTURE LIGHTS

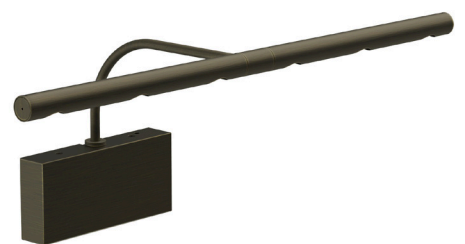
380 TM SLIMLIGHT



390 TM SLIMLIGHT PRO



962 WALL DRIVER HOUSING



330 TM MASTERLIGHT CLASSIC



331 TM MASTERLIGHT SQUARE



332 TM MASTERLIGHT ROUND



TM ACCENT LIGHTS

TM accent lights are available in a range of sizes and finishes, and have been specifically designed to partner with the TM picture light range, sharing the same quality of light and high >97+ CRI colour rendition which brings art to life.

For more information please visit tmlighting.com

TM ZERO SERIES – SURFACE | Also available with extension arms and warm dim options for Zero50 and Zero60

ZERO20

Ø22mm | 130lumens



ZERO30

Ø28mm | 180lumens



ZERO40

Ø42mm | 300lumens



ZERO50

Ø55mm | 595lumens



ZERO60

Ø63mm | 1113lumens



TM ZERO SERIES – SIDE MOUNT | Also available with warm dim options for Zero51 and Zero61

ZERO21

Ø22mm | 130lumens



ZERO31

Ø28mm | 180lumens



ZERO41

Ø42mm | 300lumens



ZERO51

Ø55mm | 595lumens



ZERO61

Ø63mm | 1113lumens



TM ZERO SERIES – ARTTRACK low voltage track with data bus | Also available with extension arms and side mount

ZERO20 Arttrack
Ø22mm | 130lumens

ZERO30 Arttrack
Ø28mm | 180lumens

ZERO40 Arttrack
Ø42mm | 300lumens

ZERO50 Arttrack
Ø55mm | 595lumens

ZERO60 Arttrack
Ø63mm | 1113lumens



TM ZERO SERIES – ARTPOINT ceiling recessed low voltage connection | Also available with extension arms

ZERO20 ArtPoint
Ø22mm | 130lumens

ZERO30 ArtPoint
Ø28mm | 180lumens

ZERO40 ArtPoint
Ø42mm | 300lumens

ZERO50 ArtPoint
Ø55mm | 595lumens

ZERO60 ArtPoint
Ø63mm | 1113lumens



TM RIVO SERIES decorative LED accent light

RIVO40 Surface
Ø42mm | 300lumens

RIVO40 ArtPoint
Ø42mm | 300lumens



TM ZERO SERIES – MAINS TRACK 230V track

ZERO50 Mains track
Ø42mm | 595lumens

ZERO60 Mains track
Ø42mm | 1113lumens



TM GALLERY LIGHTS

TM gallery lights are industry leading art gallery lighting luminaires using high colour rendition 98+ CRI LED with quick interchangeable optics. The premier lighting option for museums and art galleries with both static and fluid collections.

For more information please visit tmlighting.com

TM GALLERY SERIES – MAINS TRACK

GALLERY130 SPOTLIGHT

Ø135mm | 2175lumens | 98CRI



GALLERY160 FLOODLIGHT

Ø160mm | 4700lumens | 98+CRI



TM GALLERY SERIES – LOW VOLTAGE

G40 GALLERYFORTY ARTTRACK

Ø45mm | 250lumens



G40 GALLERYFORTY ARTPOINT

Ø45mm | 250lumens



G40 GALLERYFORTY MAGPOINT

Ø45mm | 250lumens



TM LINEAR LED LIGHTS

TM linear range offers ideal options for cove lighting and linear grazing requirements found within historic houses and large-scale hospitality and commercial spaces. Available in a variety of colour temperatures, profiles and beam widths and benchmarked with industry-leading 97+CRI LED lighting.

For more information please visit tmlighting.com

TM LINEAR POWER

430 LINEAR WASH

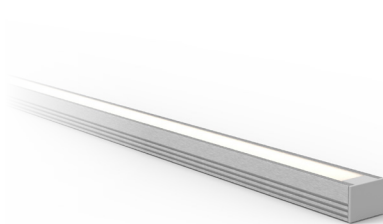


440 LINEAR GRAZE

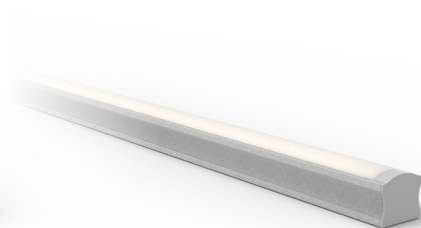


TM LINEAR BUILT IN

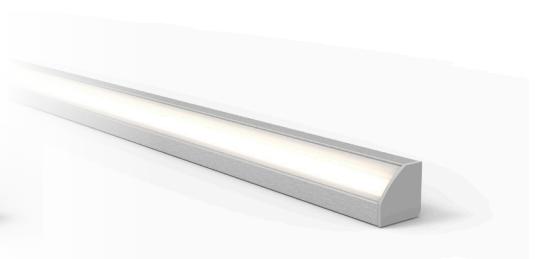
400 TM LINEAR



420 TM LINEAR PRO



430 TM LINEAR PRO 45



TM DOWNLIGHTS

The ArtDownlight with 20mm aperture discreetly hides our adjustable high-performance LED module. Available with a range of fixed beam angles or a zoom lens.

TM DOWNLIGHT RANGE

TM ARTDOWNLIGHT



TM DOWNLIGHT MODULE



TM BEDSIDE

The bedside range uses high >97 CRI LED modules to achieve a premium reading light. Perfect for hotels, the bedside range matches the finish of picture lights within the room.

TM AUSTEN THIRTY



TM BRONTË THIRTY



TM BRONTË SOLO



TM FREESTANDING

The freestanding range of lighting tools provides a simple retrofit solution of plug-in luminaires.

TM FREESTANDING RANGE

FLOOR40



FLOOR50



FLOOR60



FLOOR RIVO40



DESK20



DESK30



SQUARE UPLIGHT



TM MOUNTING SYSTEMS

A range of mounting solutions for our accent lights and picture lights including track lighting, picture light rails, magnetic trim-less Magpoint and ArtPoint; suitable for residences, lifestyle and gallery environments in both heritage and contemporary spaces.

TM ARTPOINT



Compatible with Zero Series and G40

TM MAGPOINT



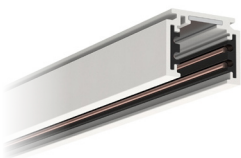
Compatible with 020, 030, 040, R40, G40 and ArtDownlight

TM ARTRAIL 48V

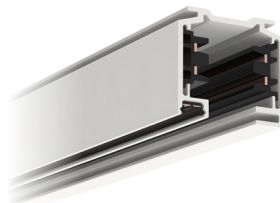


Compatible with TM Picture Lights

TM ARTRACK 48V



TM MAINS TRACK 230V



TM PRODUCT FINISHES

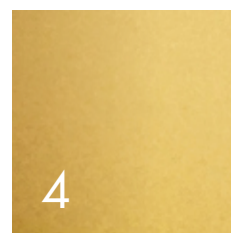
TM Lighting's product range is completely made from metal and is available in a wide range of contemporary and classic finishes, including plating and bespoke customised solutions.



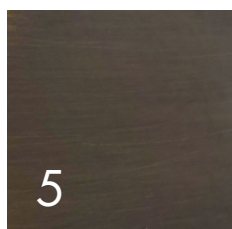
WHITE P/C
9010



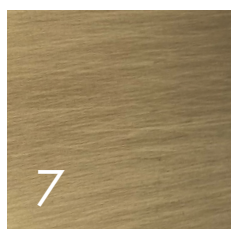
BLACK P/C
9005



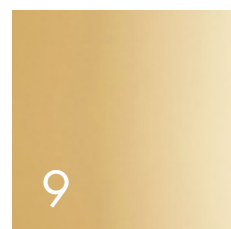
GOLD P/C



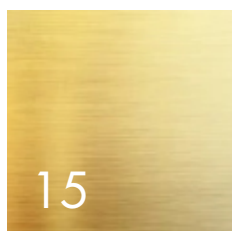
ANTIQUE
BRONZE PLATE



ANTIQUE
BRASS PLATE



POLISHED
BRASS



BRUSHED
BRASS



CUSTOM
FINISHES



FOUNDERS TM LIGHTING

Directors Harry Triggs and Andrew Molyneux founded TM Lighting in 2012.

Bringing over 40 years' combined experience in lighting and product design, TM Lighting's approach and meticulous attention to detail brings art to life with the latest and most sophisticated LED energy-efficient technology, featured in all their products, resulting in unrivaled colour rendition and light distribution.

TM Lighting works with the most prestigious collectors and institutions throughout the world. Recent commissions include: Frieze London, Goodwood House, English Heritage, Historic Royal Palaces, Masterpiece London and work with artists including Damien Hirst, Antony Gormley & Conrad Shawcross.

TM LIGHTING
7 CUBITT ST
LONDON
WC1X 0LN

+44 (0) 207 278 1600
SALES@TMLIGHTING.COM
TMLIGHTING.COM